

# Installation Guide



# Understand Chinese instantly

Innovative popup window reads and explains Chinese.



Loqu8 iCE Learn Chinese helps you understand Chinese from your mouse: just **point** or **highlight** Chinese text.

Instead of opening another website or starting another application, iCE shows you the meaning in English as it reads the words aloud in Chinese (Mandarin or Cantonese). Right-click and search the web, news, music and videos for contemporary examples. Tag the word as a favorite. Build a formatted study sheet in Microsoft Word or Excel.



# Installing

Download Loqu8 iCE Learn Chinese for your Windows PC.

Start understanding Chinese from a wide variety of websites and productivity applications.

# Install

Download and install Loqu8 iCE for your Windows PC.



[www.loqu8.com](http://www.loqu8.com)



To install Loqu8 iCE Learn Chinese:

- A. Download Loqu8 iCE software from **www.loqu8.com**
- B. Click Run (or equivalent)
- C. Click Install and follow the on-screen instructions
- D. Re-start** your computer after installation is completed

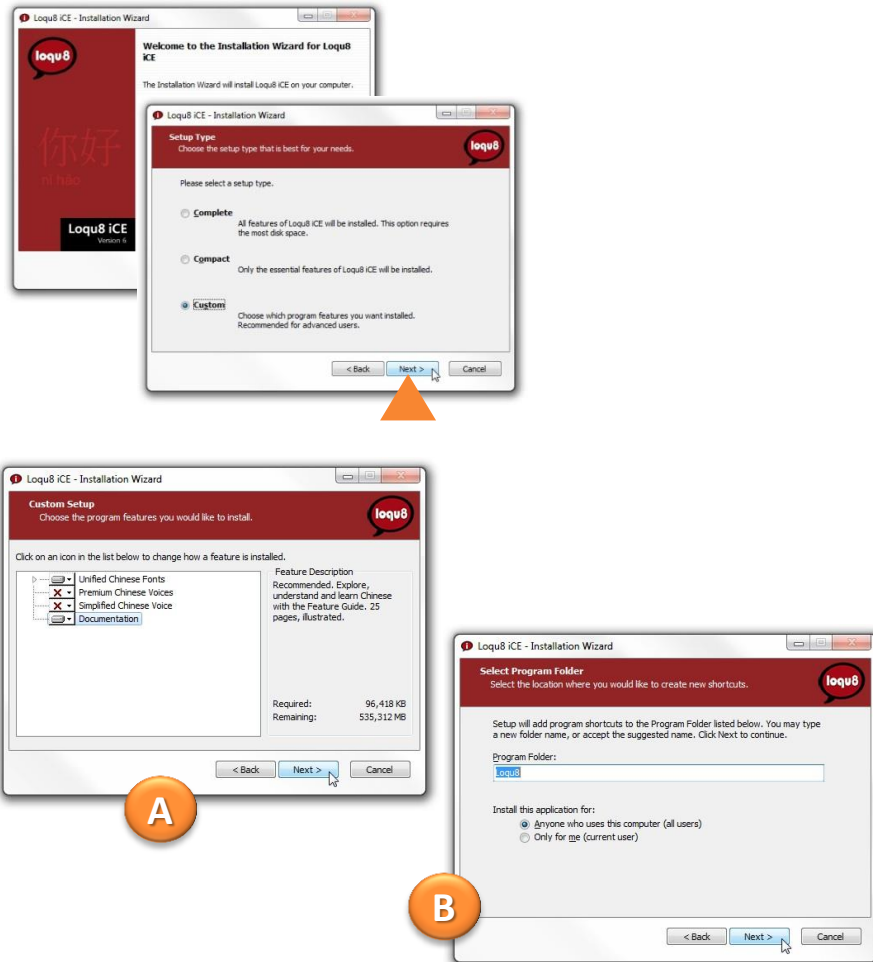
System Requirements

- Microsoft Windows 8 (desktop), 7, Vista, XP or Server 2008
- Microsoft .NET 3.5\*
- AR PL New Sung font with both traditional and simplified characters (recommended)

**\*Tip** Get free updates and dictionaries (Chinese-German, Chinese-French from <http://www.loqu8.com/download.htm>)

# Installation options

Install just the accessories you want.



The latest version of iCE includes a powerful wizard that gives you new options during installation.

A. Choose from these accessories:

- Unified Chinese Font (recommended)
- Premium Chinese Voices (optional)
- Simplified Chinese Voice (optional)
- Documentation (recommended)

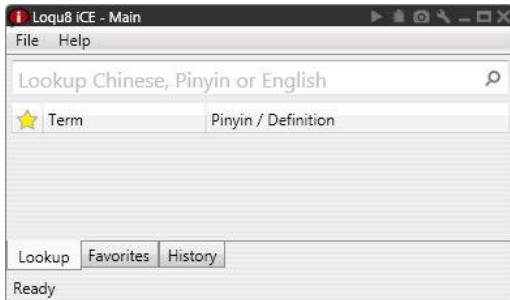
B. You may install iCE for multiple users on the same computer:

- Anyone who uses this computer (all users)
- Only for me (current user)

**Tip** After installation, you may change (add or remove accessories) from the Windows Control Panel by re-running the Installation Wizard. See Uninstall section of this guide (p.11)

# Start

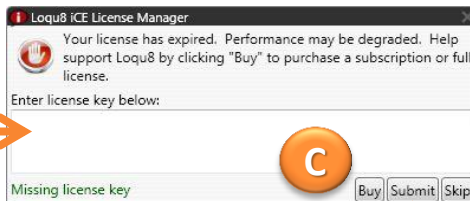
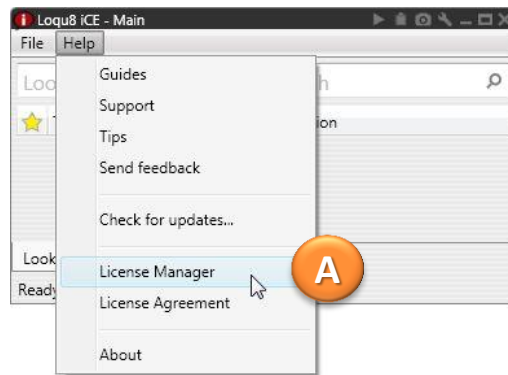
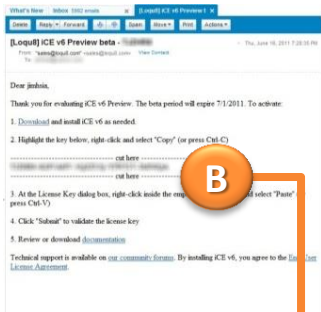
Start iCE and activate your license.



Start Loqu8 iCE by double-clicking the Loqu8 iCE program icon on your Windows desktop

To activate your software:

- A. From the iCE main window, choose Help > **License Manager**
- B. From your Loqu8 License Key email, copy (Ctrl+C) the 44-character key
- C. Paste (Ctrl+V) the license key into the License Manager and press Submit. After your license is activated, press Continue



**Tip** Purchase a license from: <http://www.loqu8.com/buy.htm>

# Using

Begin finding and understanding Chinese.



To find Chinese words and phrases:

1. From the Main window, lookup **shanghai airport**
2. Press Enter and you should see several airports listed.
3. If your speaker or headphones are turned on, double-click on each entry to hear the Chinese read aloud in Mandarin



To understand Chinese with the popup window:

- Point to Chinese text, or
- Highlight Chinese text

**Tip** For more information, see *Using Loqu8 iCE*



To close this program, click File > Exit

# Learn more

Get the most out of your Loqu8 iCE experience.



Learn more about Loqu8 iCE:

- View video tutorials of iCE highlights:  
<http://www.loqu8.com/videos.htm>
- Tour the top 5 features:  
<http://www.loqu8.com/feature.tour.htm>
- Dig deeper into selected features:  
<http://www.loqu8.com/features.htm>
- Browse or print documentation:  
<http://www.loqu8.com/documentation.htm>
- All features are not support in every edition. Compare :  
<http://www.loqu8.com/editions.htm>







Reference

# Professional, Standard or Free?

Loqu8 iCE has something for everybody and every budget.

| Free<br>Level 1                               | Standard<br>Level 1-2                          | Professional<br>Level 1-3                        |
|---|--|--|
| <i>8X faster than<br/>online dictionaries</i> | <i>Understand and<br/>learn Chinese easier</i> | <i>Most powerful tools<br/>for your business</i> |

## Level 1: Understand basic Chinese

|   |          |                 |                 |
|---|----------|-----------------|-----------------|
| Point to text with mouse (LiveScan™)        | ●        | ●               | ●               |
| Highlight text with mouse (HighlightScan™)  | Basic    | ●               | ●               |
| Dictionary lookup: Chinese, English, Pinyin | Basic    | 105,000 entries | 105,000 entries |
| Tag favorite words                          | ●        | ●               | ●               |
| Hear basic pronunciations                   | ●        | ●               | ●               |
| Picture ads                                 | ●        | ●               | ●               |
| Premium Voices with rate control            | Optional | Optional        | Optional        |

## Level 2: Learn Chinese interactively

|   |              |            |             |
|---|--------------|------------|-------------|
| Search Chinese sites with a mouse click       | Limited      | ●          | ●           |
| Auto-translate with Google or Bing            | English only | ●          | ●           |
| WebTranslate™                                 | ●            | ●          | ●           |
| AutoPronounce™                                | ●            | ●          | ●           |
| Selective copy with <i>Copy From</i>          | ●            | ●          | ●           |
| Bopomofo (zhuyin fuhao) phonetics             | ●            | ●          | ●           |
| Listen to Chinese read aloud                  | ●            | 1 HQ voice | 2 HQ voices |
| Show pronunciation tones with ColorTones™     | ●            | ●          | ●           |
| <i>Breakdown</i> longer words into components | ●            | ●          | ●           |
| Enlarge Chinese fonts for greater legibility  | ●            | ●          | ●           |

## Level 3: Accelerate learning

|   |   |   |                |
|---|---|---|----------------|
| Create custom study lists with <i>Copy+</i>     | ● | ● | ●              |
| Create/edit words and definitions               | ● | ● | Up to 250,000  |
| Create/edit/load new dictionaries               | ● | ● | German, French |
| Share dictionaries with other Pro users         | ● | ● | ●              |
| <i>History</i> tracks popular words you've seen | ● | ● | ●              |
| Export to ZDT flashcards                        | ● | ● | ●              |

## Work everywhere

|  |   |   |   |
|--|---|---|---|
| Browsers: Chrome, Internet Explorer, Firefox | ● | ● | ● |
| Microsoft Word, Excel, Outlook, PowerPoint   | ● | ● | ● |
| Adobe® PDF                                   | ● | ● | ● |
| Skype®                                       | ● | ● | ● |



Loqu8 has an edition that's just right for you. Choose the free edition or begin a monthly subscription starting at \$5 USD.

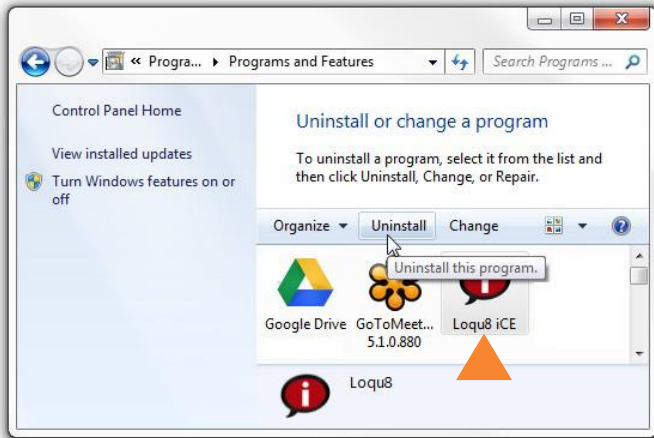
Not sure which one is right for you? Our **Standard Edition** is popular for many students and casual learners. With high-quality Mandarin voice and AutoPronounce, it has all the key features at an affordable price.

Advanced students and business professionals (including professional translators) choose the **Professional Edition** for its complete range of features (more voices, history tracking) and its powerful customization. Create your own dictionary or import dictionaries from others.

For more information on each iCE editions, visit  
<http://www.loqu8.com/editions.htm>

# Uninstall

New Installation Wizard simplified uninstall, modify and repair.



If Loqu8 iCE isn't right for you, it's easy to uninstall.

1. From the Windows Control Panel, choose **Loqu8 iCE**
2. Click uninstall
3. From the Installation Wizard, choose **Uninstall** and click OK

Thanks for trying Loqu8 iCE.



**Tip** After installation, you may change (add or remove accessories). From the Installation Wizard, choose **Modify Available Options**

**Tip** If iCE doesn't seem to smoothly like it did when you first installed it, the application may have become damaged. From the Installation Wizard, choose **Repair Application**



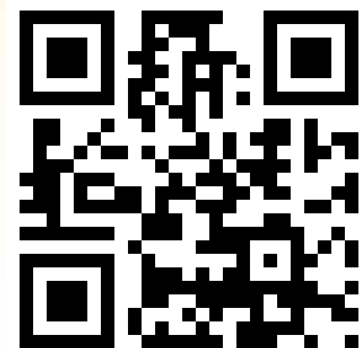
# Installation Guide

Loqu8 iCE  
iNterpret Chinese-English

|          |  |
|----------|--|
| Email    | <a href="mailto:info@loqu8.com">info@loqu8.com</a>                       |
| Website  | <a href="http://www.loqu8.com">www.loqu8.com</a>                         |
| Purchase | <a href="http://www.loqu8.com/buy.htm">www.loqu8.com/buy.htm</a>         |
| Support  | <a href="http://www.loqu8.com/support.htm">www.loqu8.com/support.htm</a> |

© Copyright 2013 Loqu8, Inc. All rights reserved. Rev 6.6

No portion of this document may be reproduced in any form, by any means or translated into any language in any form by any means without prior written permission from Loqu8.



<http://www.loqu8.com>