

# Personalizing



Learn  
Chinese

# Universal

Understand and learn Chinese (almost) everywhere.



Language experts have identified three critical success factors for learning:

1. Focus on content that's important or interesting to you
2. Learn what you need, when you need it
3. Explore how the words are used to get a more complete understanding

Loqu8 incorporates those essential learning techniques into iCE, the first Chinese learning system with augmented learning. Instead of rote memorization of vocabulary and grammar rules, iCE inspires users to interact with the Chinese language using real-world materials: news, emails, chats, documents, images and more.

As your proficiency in Chinese improves, tune the default settings to meet your emerging needs. It's like removing "training wheels" from your bicycle—only a lot less scary. For example, if you've slowed down the speech rate when you're learning pronunciation, gradually speed up the speech rate to practice hearing and speaking Chinese at conversational rates.

# Unlimited

Get motivated by learning what you want, when you want.

Some language programs follow a rigid curriculum for everyone—whether you're a child, university student or industry professional. By comparison, Loqu8 gives you the flexibility to tailor your learning to the topics that interest you.

- Your time is valuable. Start with the subjects that are useful to you. With **LiveScan** and **HighlightScan**, focus on the documents, emails, and websites that have the content that you need to understand.
- As you see the Chinese words, hear them read aloud with **AutoPronounce**. Follow along with the phonetics (Pinyin or Bopomofo) as you say the words. Click to hear the words pronounced again with perfect consistency.
- Begin using the Chinese you just learned. Incorporate Chinese into your daily conversations. Right-click and copy the Chinese text into your documents and emails using **Selective Copy**.



The screenshot shows the Loqu8 iCE - HighlightScan interface. At the top is a photo of a nightclub scene with the text "今日台北夜生活" (Today Taipei Nightlife). Below the photo is a text overlay with the title "Today the Taipei nightlife" and the Chinese characters "今日台北夜生活" with Pinyin "jīn rì tái běi yè shēng huó". A mouse cursor is hovering over the characters "夜生活". To the left of the interface, there are two panels: "Reading Panel" and "Detail Panel". The "Detail Panel" shows the characters "夜生活" and the Pinyin "yè shēng huó" and "night life". A callout bubble points to a play button icon in the interface, labeled "Hear Chinese on-demand". Another callout bubble points to the "Detail Panel", labeled "Definition in English (or other languages)".

Reading Panel

Detail Panel

Hear Chinese on-demand

Definition in English (or other languages)

# Your way

Personalize iCE to fit your learning style.



Objective  
**Understanding meaning**  
ColorTones: off



Objective  
**Pronunciation with Pinyin**  
Definition: off



Objective  
**Identify stroke details of Chinese characters**  
Zoom: 3.0X



Bopomofo

Source

HSK levels

Chinese proficiency test

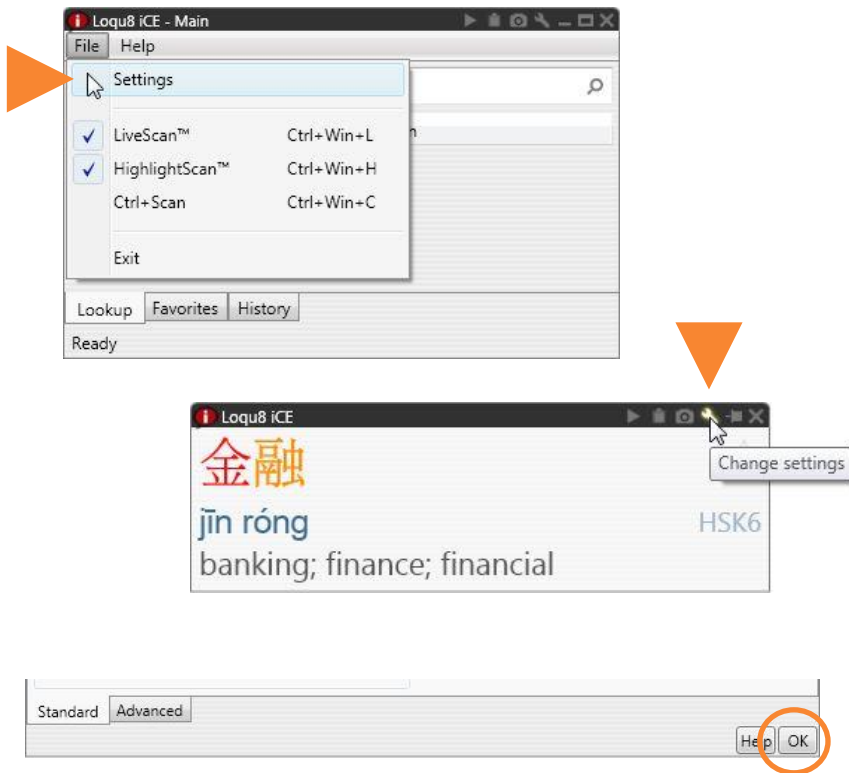


# Settings

Tailor Loqu8 iCE to best your needs today—and change it tomorrow as your proficiency in Chinese improves.

# Open

Open Settings with just 1 or 2 clicks.



To open the Settings screen using either:

- Main window: File > **Settings**
- Other windows: click wrench icon for **Change Settings**

To close the Settings, click **OK**.

**Tip** An interactive guide explaining the Settings is available at <http://www.loqu8.com/settings.htm>

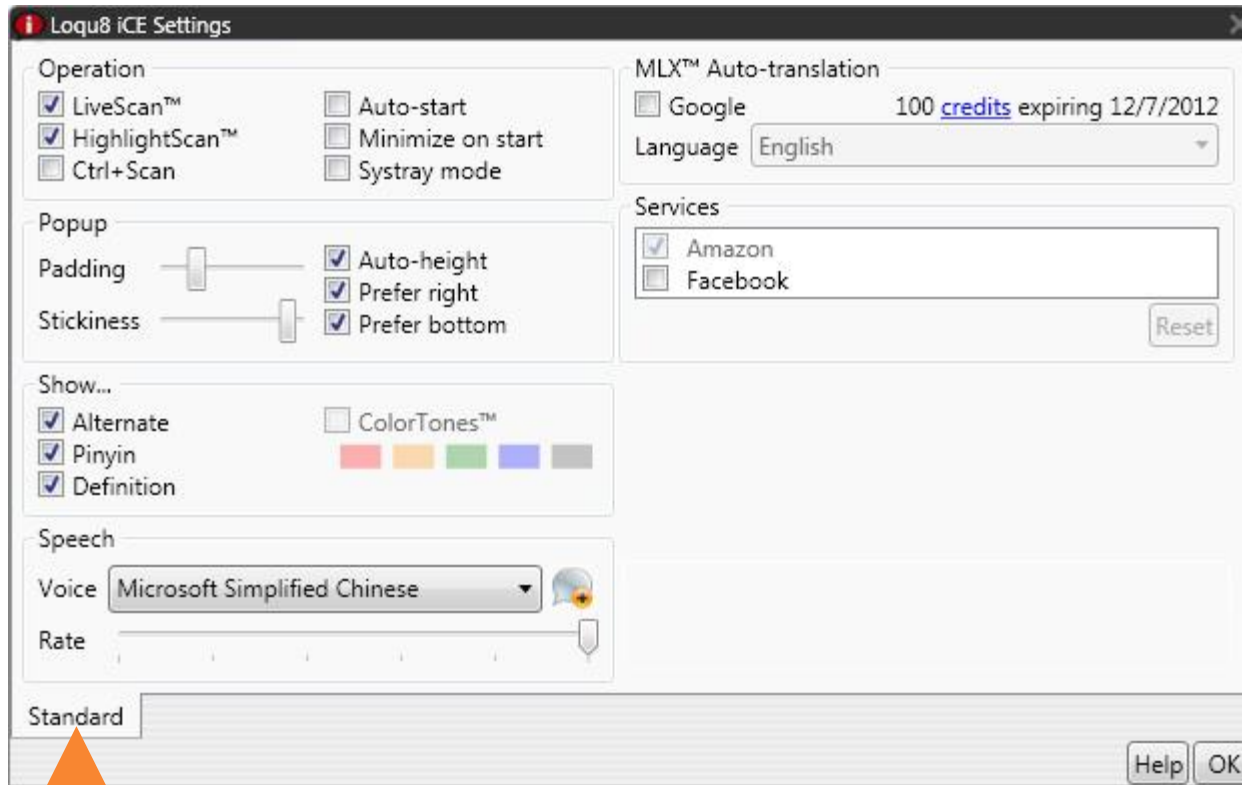
**Tip** Download the latest Loqu8 iCE software from <http://www.loqu8.com/download.htm>

# Settings



**Standard** settings for Standard and Professional Editions

# Settings



Settings for Free Edition



# Settings > Operation

Scan modes and startup options for iCE.



**Tip** iCE uses Ctrl+C and the Windows clipboard. If your application is experiencing unusual behavior, you may limit iCE's interactions as you troubleshoot your applications.

- Un-check **LiveScan** and **HighlightScan**. By suspending iCE scan operations, interoperability issues with other applications are minimized
- Check **Ctrl+Scan** option. This resolves many application issues when using iCE only occasionally

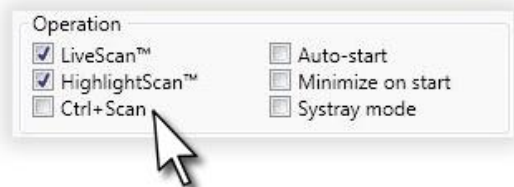
Control the basic operations of Loqu8 iCE's LiveScan and HighlightScan function. By default:

- **LiveScan**: pointing at any Chinese text will popup the LiveScan window
- **HighlightScan**: highlighting Chinese text will popup the HighlightScan window

**New!** When enabled, the new **Ctrl+Scan** option let's you invoke these scanning functions only when you press the Ctrl (Control) key:

- **Ctrl+LiveScan**: Press Ctrl while pointing at Chinese text for the LiveScan window
- **Ctrl+HighlightScan**: Press Ctrl while highlighting Chinese text for the HighlightScan window

# Settings > Operation

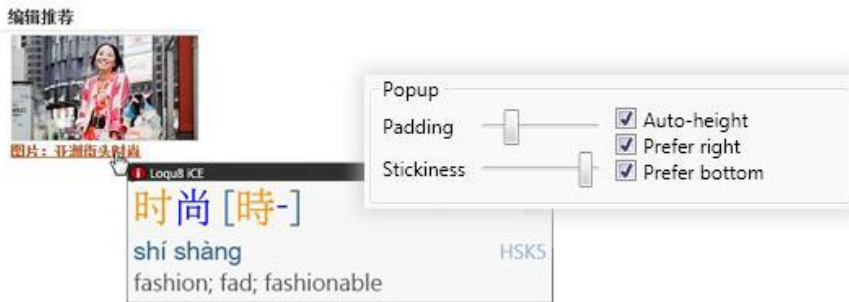


- **LiveScan™** is the most popular feature of iCE. Hover your mouse over a Chinese word and see a popup window reading the Chinese word(s) while showing you the English meaning and how to pronounce it (Pinyin or Bopomofo). Un-check to disable this function
- **HighlightScan™** lets your understand a range of text. Highlight the Chinese text and iCE opens a HighlightScan window. An auto-translation provides a simplistic translation. Hover your mouse over the words in the reading panel to see iCE's dictionary-based meanings. Un-check to disable this function
- **Ctrl+Scan**: Control precisely when iCE interacts with your text. Hold the Control (Ctrl) key while pointing at text (Ctrl+LiveScan) or highlighting text (Ctrl+HighlightScan)
- **Auto-start**: Check to enable iCE to launch automatically when your computer starts up
- **Minimize on start**: Hides the iCE Main window after starting up
- **Systray mode**: Hides iCE from your Program Bar and the Main window. For users who want a minimalist view of iCE (similar to earlier versions of iCE)

**Tip** Occasionally, some system utilities (MSCONFIG) may prevent iCE from starting up automatically. To resolve this issue, you need to update your Windows **Startup** folder. From Windows Explorer, drag the Loqu8 iCE program icon into your Windows Startup folder

# Settings > Popup

Fine-tune the location and behavior of the LiveScan and HighlightScan windows.



**Tip** On ultra-high resolution (or very low-resolution) displays, you may want to tweak the sliders for padding and stickiness. For most users, there's no need to change them

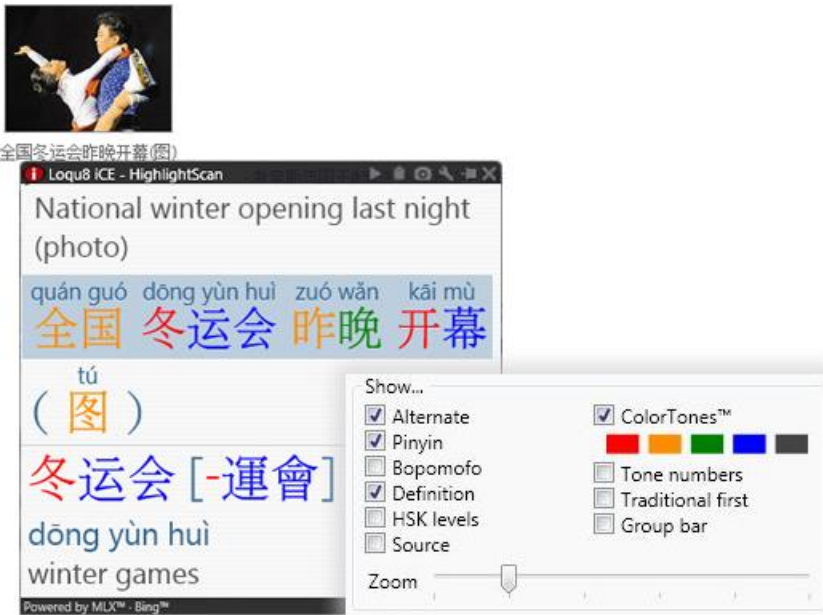
The three checkboxes control the size and location of the popup window, relative to your mouse pointer. The default is to popup the window in the space above and to the left side (my preference is to have the window on the right and bottom)

If you're satisfied with the way LiveScan and HighlightScan windows appear on your screen, feel free to skip these settings.

- **Padding:** Distance from the mouse pointer to the popup windows (LiveScan, HighlightScan)
- **Stickiness:** Greater values makes it easier to click and take actions in the popup windows, but slows responsiveness when moving word to word
- **Auto-height:** Let the program adjust the height of the popup windows automatically
- **Prefer right or bottom:** Default positions for the LiveScan and HighlightScan windows is the upper left position of your mouse pointer. Check right or bottom to position the windows differently

# Settings > Show

ColorTones, tone numbers or tone marks? They're all customizable here.



Loqu8 iCE's powerful LiveScan, HighlightScan and lists (Lookup, Favorites, History) can be customized to show only the details that interest you. For example in Taiwan, you would probably choose Bopomofo (not Pinyin).

- **Alternate:** When enabled, pointing to Simplified Chinese will show Traditional Chinese (and vice versa)
- **Pinyin:** Shows Pinyin phonetics (most popular, especially in China)
- **Bopomofo:** Shows *zhuyin fuhao* (common in Taiwan)\*
- **Definition:** Shows meanings from the dictionary
- **HSK levels:** Chinese proficiency levels (1-6) for Hanyu Shuiping Kaoshi exam. Levels 5 and 6 are advanced; levels 1-2 are elementary\*
- **Source:** Indicate the source of the dictionary or MLX Auto-translation\*
- **ColorTones:** Chinese characters are shown with colors corresponding to each of the 5 tones in Mandarin Chinese\*
- **Tone numbers:** Instead of tone marks, show tone numbers\*

\* Some settings are available only on Standard and Professional Editions.

# Settings > Show



- **Traditional first:** In the lists (Lookup, Favorites, History), show the Traditional Chinese first\*
- **Group bar:** Group entries in the list by column header (Starred, Term, Pinyin / Definition, HSK, etc.)\*
- **Zoom:** Enlarge the Chinese text and English definitions. Ideal for viewing character details in classrooms\*

Examples include [A] almost everything is enabled, [B] Bopomofo only, no definition [C] Pinyin numbers only, [D] Pinyin marks, [E] default for Free (no ColorTones).

**Tip** As you develop proficiency in Chinese, start **turning off** the learning aids (kind of like removing training wheels from your bicycle).

- iCE lets you personalize the settings to show just the information you need. For example, turn off Pinyin or Definitions to train you memory while still hearing the auto-pronunciations and seeing the enlarged Chinese characters
- If the Chinese or English text is displayed incorrectly in iCE, try the recommended fonts (ARPL New Sung and Arial)
- Using Windows XP? You will also need to install Far East Asian language support

# Settings > Speech

Learn pronunciation and conversational Chinese from a tireless tutor.

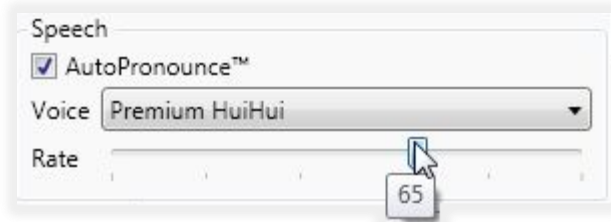


Maximize your learning experience by seeing and hearing Chinese read aloud to you. iCE supports a wide range of text-speech voices for the most powerful auditory experience. Enable AutoPronounce or choose Pronounce from the toolbar (New!) or right-click menu.

- **AutoPronounce:** Immediately pronounce the Chinese word in LiveScan and HighlightScan. In HighlightScan, pointing will also re-pronounce the word\*
- **Voice:** Choose from Microsoft Simplified Chinese, Microsoft Lili (Windows 7/Vista Ultimate) and other SAPI text-speech voices. Bing voices require an Internet connection. Premium voices run locally and support rate control\*
- **Rate:** Control the pronunciation rate and pauses. Slide LEFT to hear words pronounced slowly, tone by tone. Slide RIGHT to simulate the rapid pace of conversational Chinese

\* Some settings are available only on Standard and Professional Editions.

# Settings > Speech

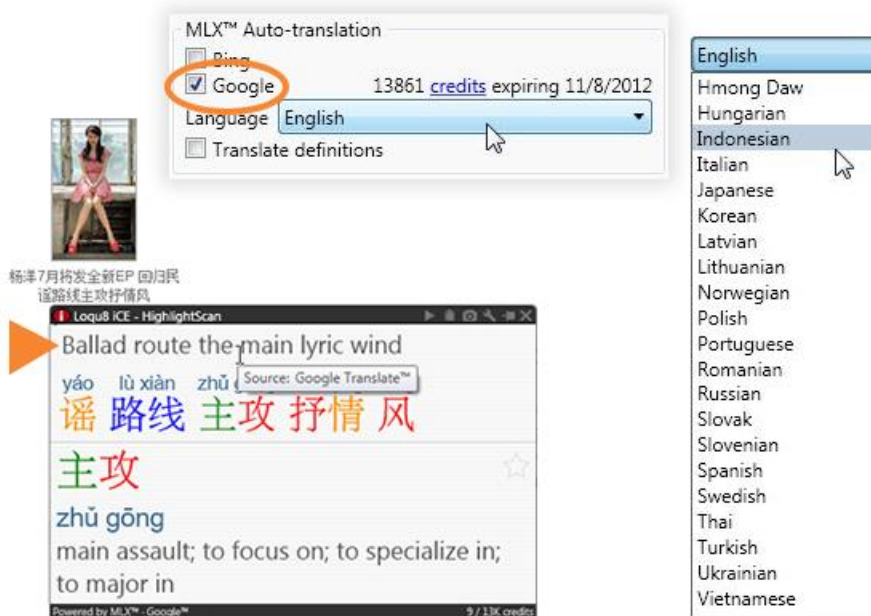


## Tip

- **Voice Rate Control** is a powerful feature (but it's not supported on the Bing voices). When you're learning Chinese and you want to hear the nuance of every tone enunciated deliberately, adjust iCE's rate control down to 20-30. You'll hear the tones pronounced slowly and with long pauses. As your proficiency improves, dial up the rate. When you want to practice listening to conversational Chinese at a rapid clip, move the slider all the way to the right (100)
- Microsoft Simplified Chinese is a free voice. Bing HuiHui and HanHan voices are higher-quality voices that require an Internet connection.

# Settings > MLX Auto-translations

Understand Chinese faster with multi-language extensions (MLX).



Instead of copy+paste into a translation site, just highlight and iCE shows you the meaning of your selection **inside** the popup window.

Choose auto-translations from Microsoft Bing, Google Translator or both.

- **Bing:** Use Microsoft Bing Translate. This web service is currently free, but Microsoft may charge a fee in the near future\*
- **Google:** Use Google Translator
- **Credits:** Use with Google Translate Service. One hundred credits are included with iCE; up to 100 Chinese characters and punctuation may be auto-translated with 100 credits
- **Language:** Choose from Arabic, Bulgarian, Catalan, Czech, Danish, Dutch, English, Estonian, Finnish, French, German, Greek, Haitian Creole, Hmong Daw, Hungarian, Indonesian, Italian, Japanese, Korean, Latvian, Lithuanian, Norwegian, Polish, Portuguese, Romanian, Russian, Slovak, Slovenian, Spanish, Swedish, Thai, Turkish, Ukrainian and Vietnamese. Not all languages are supported with both Bing and Google

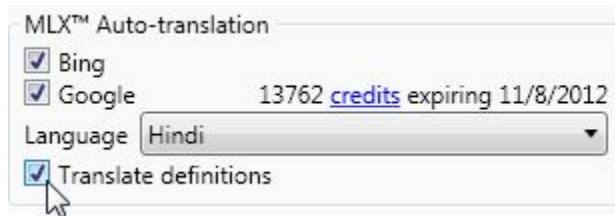
\* Some settings are available only on Standard and Professional Editions.



# Settings > MLX Auto-translations



一口咬到巴黎的浪漫慵  
懒! 浪漫又俏皮的  
Paris主题曲奇饼干有  
没有让



**Translate definitions:** Translate the English definitions into the specified language\*

## Tip

- Loqu8 uses third-party web services to perform the Auto-translations. A web connection is required. Auto-translation should be used with the Chinese-English dictionary-based translations for better results
- **WebTranslate™** provides 3 translations from Google and Microsoft—with one click
- For German or French definitions, see the free Chinese-German and Chinese-French dictionaries

\* Some settings are available only on Standard and Professional Editions.

# Settings > Copy<sup>+</sup>/Export

Use iCE's Chinese text, phonetics and definitions in other applications.

simplified	traditional	pinyin	bopomofo	definition
七叶树	七葉樹	qī yè shù	ㄑㄧ ㄩㄛˋ ㄕㄨˋ	Chinese horse chestnut ( <i>Aesculus chinensis</i> )
上马	上馬	shàng mǎ	ㄕㄨㄤˋ ㄇㄚˇ	to get on a horse; to mount
下马	下馬	xià mǎ	ㄒㄩㄚˋ ㄇㄚˇ	dismount a horse
中箭落马	中箭落馬	zhōng jiàn luò mǎ	ㄓㄨㄥ ㄐㄩㄢˋ ㄌㄨㄛˋ ㄇㄚˇ	lit. to be struck by an arrow and fall from one's horse; to suffer a serious setback (idiom)
乘	乘	shèng	ㄕㄨㄥˋ	four horse military chariot (archaic); four (archaic); generic term for history books

iCE makes it easy to copy, paste or export into other programs. The new **Copy<sup>+</sup>** feature lets you generate custom study sheets with just a few clicks.

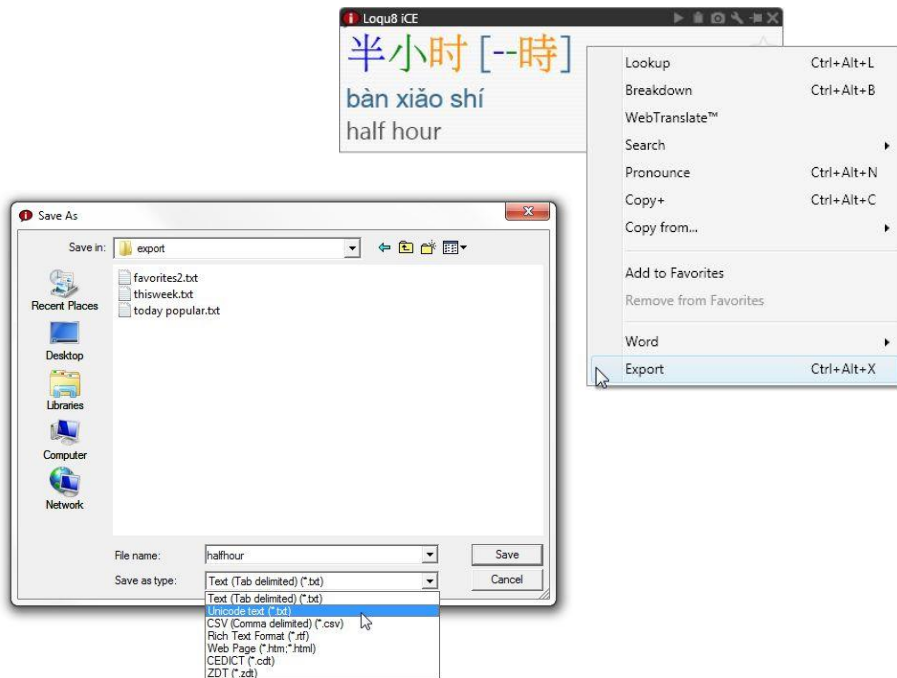
From the LiveScan, HighlightScan or Main window (Lookup, Favorites, History), right-click on an entry and choose Copy<sup>+</sup> to generate a formatted table that's ready to be pasted into Microsoft Word or Excel. Or, choose **Export** to save the selected entries in text (delimited, Unicode), CEDICT, web or ZDT formats.

- **Rubify:** When enabled, adds a formatted row of Pinyin and Chinese ("rubytex")\*
- **Table:** When enabled, creates a formatted table with Simplified, Traditional, Pinyin, Bopomofo and Definition entries\*
- **Header:** Includes a row for the column headings Simplified, Traditional, Pinyin, Bopomofo and Definition\*
- **Ruby:** Font used for the Pinyin and Bopomofo in the iCE program and for Copy<sup>+</sup>; Arial is recommended\*
- **Chinese:** Font used for both Simplified and Traditional Chinese. This font is used in the iCE program and for Copy<sup>+</sup>; AR PL New Sung is recommended\*



\* Some settings are available only on Standard and Professional Editions.

# Settings > Copy<sup>+</sup>/Export



## Tip

- CEDICT format is the native Chinese-English dictionary format. DOC is compatible with Microsoft Word. ZDT (Zhongwen Development Tool) is an open-source flashcard format; see <http://zdt.sourceforge.net/> for details
- If the Chinese or English text is displayed incorrectly in iCE, try the recommended fonts (ARPL New Sung and Arial)
- If you are using Windows XP, you will also need to install Far East Asian language support

The image shows a screenshot of Microsoft Excel with a table containing Chinese and English text. The table has 5 columns (A-E) and 3 rows (1-3). The first row contains the headers: 'simplified', 'traditional', 'pinyin', 'definition', and 'hsk'. The second row contains the text: '半小时', '半小時', 'bàn xiǎo shí', 'half hour', and a small icon. The third row is empty.

	A	B	C	D	E
1	simplified	traditional	pinyin	definition	hsk
2	半小时	半小時	bàn xiǎo shí	half hour	☺
3					

# Settings > Services

Access additional web services from Amazon and Facebook.



Share word postings on your Facebook wall and view product images from Amazon.

Choose web service:

- **Amazon:** Displays images and ads from Amazon\*
- **Facebook:** Post screenshots of the selected words to your Facebook wall

## Tip

- The Amazon image ads may not be disabled in the iCE Free edition
- To clear or reset your Facebook login information, select Facebook and click **Reset**

\* Some settings are available only on Standard and Professional Editions.

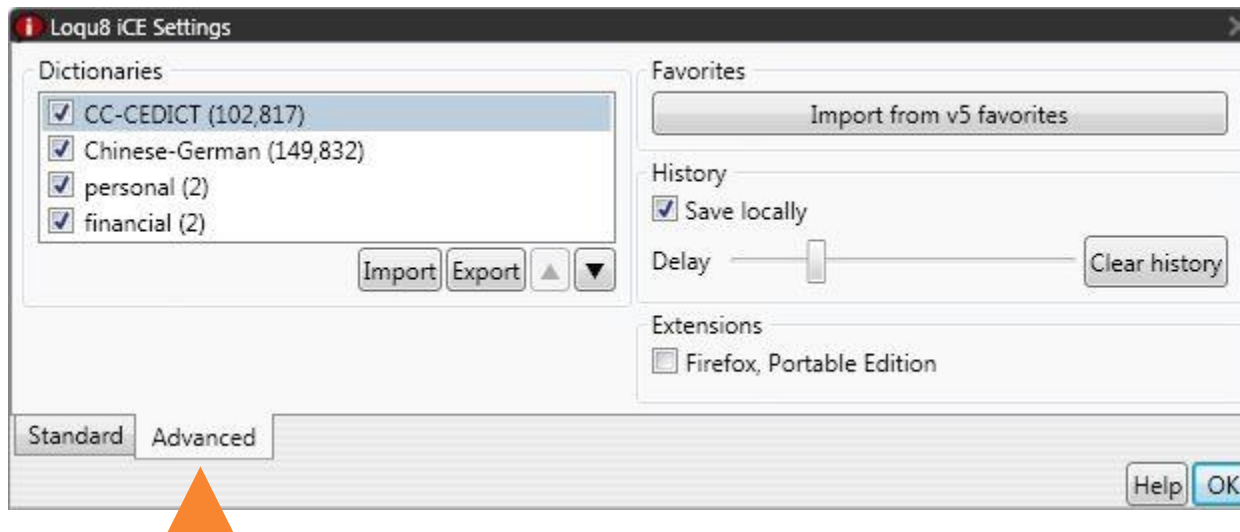


# Advanced Settings

Create your personal translation dictionaries. Share with others or add new dictionaries. For iCE Professional Edition users only.

# Advanced Settings

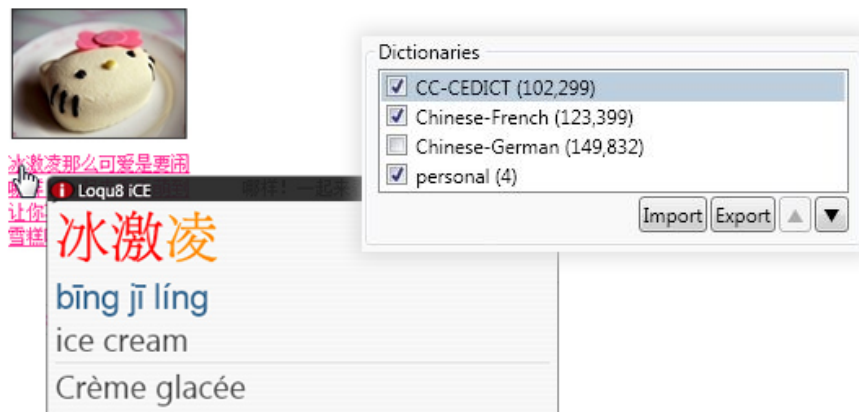
Accelerate your learning with these powerful capabilities.



**Advanced** Settings for Professional Edition

# Advanced > Dictionaries

Customize the dictionary with your own words, phrases and definitions.



Loqu8 iCE Professional supports customized definitions and dictionaries. Show exactly what you want, in any language. Or with multiple languages—all at the same time.

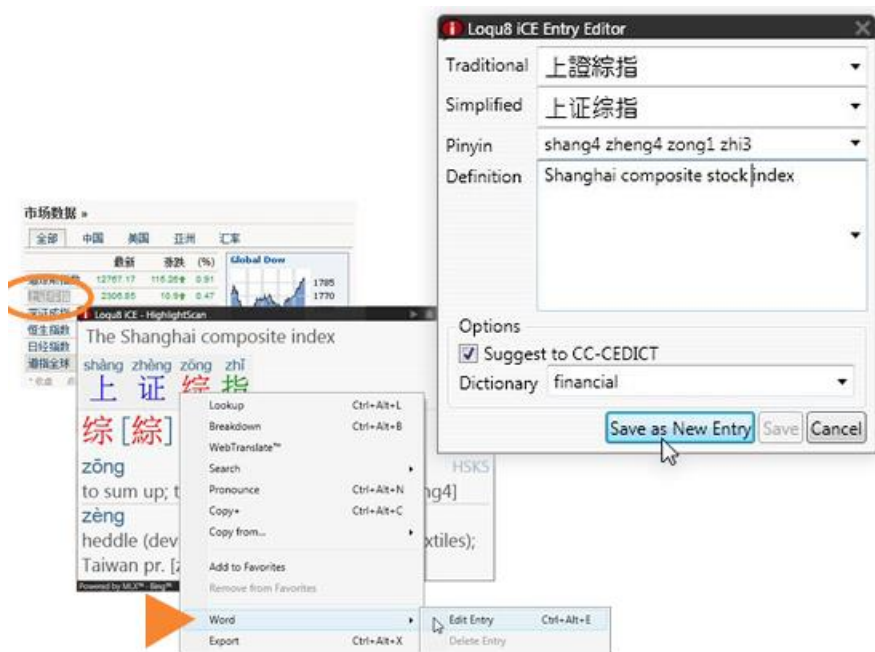
To add a dictionary:

1. From Settings, choose the **Advanced** tab
2. Click **Import**
3. Select your dictionary file. iCE supports CEDICT dictionary (.CDT, .TXT, U8) files and ZDT (.ZDT, .TXT, .U8) flashcard files with Unicode UTF8 encoding. The largest dictionary that can be imported into iCE is now 250,000 entries (up from 20,000 in the previous version). A single word may have multiple definitions
4. After the dictionary is imported, it will appear in the list. The number shown in parentheses is the number of entries in the dictionary
5. Click **OK** to save and close the Settings dialog

## Tip

- Chinese-German dictionary includes over 149,000 entries with 180,000 definitions and 600 examples
- Chinese-French dictionary features more than 123,000 entries
- Download these dictionaries from <http://www.loqu8.com/resources.htm>

# Advanced > Dictionaries



To add your own dictionary entry:

1. **Highlight** the Chinese characters and display the Auto-translated definition in the HighlightScan window
2. Select the Chinese characters you want to add into your custom dictionary
3. Right-click and choose Word > **Edit Entry**
4. In the Highlight Entry Editor dialog, complete all the fields
5. Click **Save as New Entry** to add your new custom definition

## Tip

- To **verify** your new definition has been added, point to the Chinese word or phrase and see the new definition in the LiveScan window. Your new entry is also visible in the HighlightScan and Main Lists (Lookup, Favorites, History).
- In the **Definition** field, enter all the information for the word or phrase to help you understand and learn when to use it. For example, you may want to add the Chinese names of your colleagues and use their English names and contact information for the definition



# Advanced > Favorites

Migrate your iCE v5 list of favorites.



If you're upgrading from Loqu8 iCE Version 5, import the list of words that you tagged as your "favorites" into Version 6.

Importing favorites:

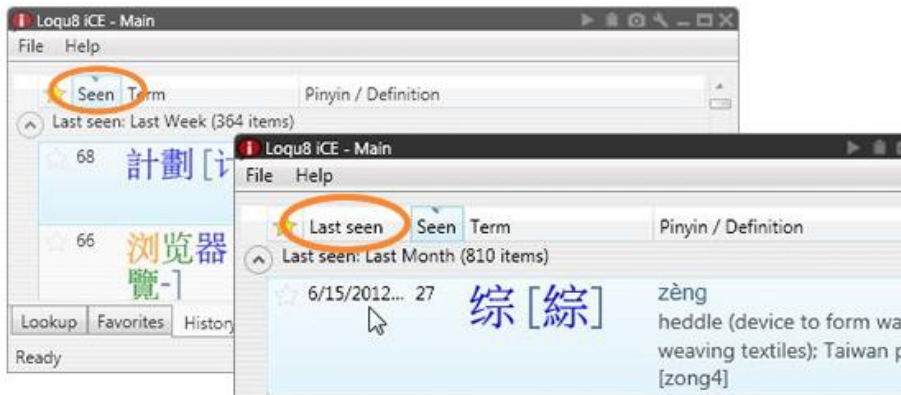
1. From the Main window, click on the **Favorites** tab to view your current list of favorite words
2. Click on Settings > Advanced to view the advanced tools and settings
3. Click the **Import from v5 favorites** button. Depending on the size of your favorites list, your words should be added in a few seconds to about a minute

## Tip

- If you are upgrading to iCE 6 Standard Edition (not Professional Edition), be sure to import your favorites during your 14-day free trial
- Once you enter your new license key for Standard Edition, the Advanced Settings tab and the Import Favorites tool will no longer be available

# Advanced > History

Like a time machine, iCE can show you words and phrases you've seen recently.



Word tracking is one of the powerful capabilities of the Professional Edition. When you use iCE with Chinese websites and documents, you can generate a list of the words you see on a regular basis. Or with multiple languages—all at the same time.

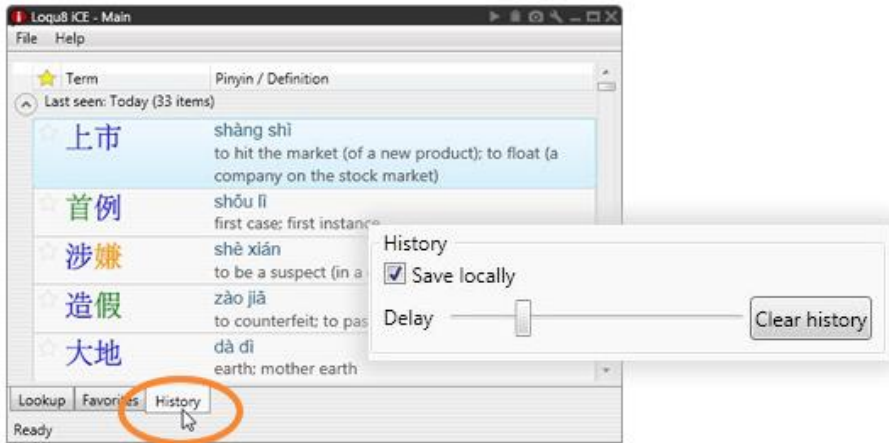
With History, you can see:

- The most popular words you've ever seen (or just today)
- Just the words you've last seen this today (or this month...)
- All your favorite words, sorted by the first time you've seen them

iCE tags words based upon your actual usage:

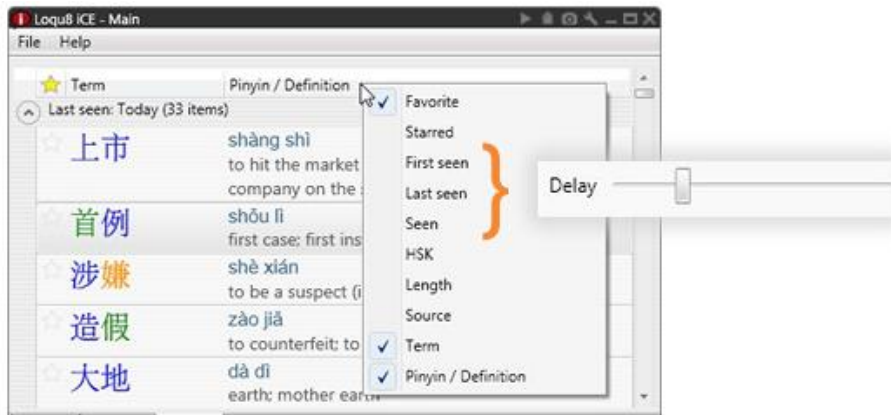
- **Seen:** Number of times you've viewed or interacted with the word
- **First Seen:** Time and date stamp of the your first view of a word
- **Last Seen:** Most recent time and date stamp for a specific word

# Advanced > History



Words are tagged only after you've seen them ("delay") or if you've interacted with the word (right-click, chose Pronounce or Copy+).

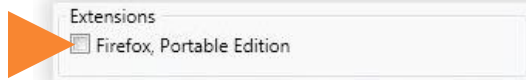
- **Save locally:** On faster computers, save your History on your local computer
- **Delay:** The minimum period of time you've seen a word before the event is tracked as a "seen". Slide the control LEFT to minimize the delay in recognizing a word as seen; this will increase the words you've seen. Slide the control RIGHT to reduce the number of words counted as seen.
- **Clear history:** Erase word tracking logs



**Tip** Right-click on the **column header** (Starred, Term, Pinyin/Definition) to add Seen, First Seen, Last Seen or other fields to the column header

# Advanced > Extensions

Use iCE on-the-go with Firefox Portable Edition.



If you carry your favorite applications on a USB flash or portable drive, you can bring iCE to use on any Windows 7/Vista/XP computer.

To use iCE as a portable application:

1. Install Mozilla Firefox, Portable Edition
2. Install Loqu8 iCE
3. From Advanced Settings, check **Firefox, Portable Edition**
4. Click OK to close Settings

## Tip

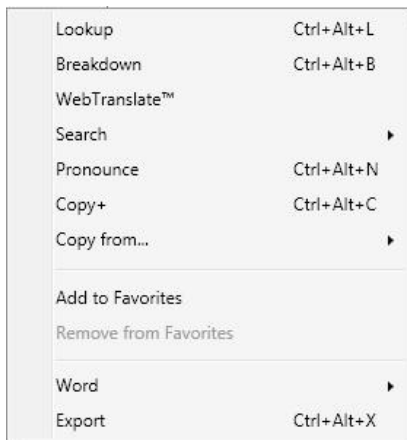
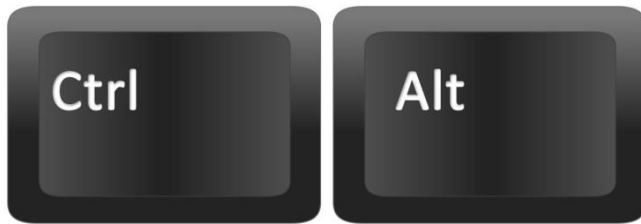
- For best performance, most features of iCE can be used **offline**; no Internet connection is required
- The Portable Edition of Firefox is not the same as the standard, desktop version
- Download Firefox Portable Edition from [http://portableapps.com/apps/internet/firefox\\_portable](http://portableapps.com/apps/internet/firefox_portable)



# Reference

# Shortcuts

Touch these keys for immediate access to popular functions.



Many popular iCE functions are accessible from the shortcut keys. These functions are available with the **LiveScan** and **HighlightScan** when a Chinese word(s) is selected.\*

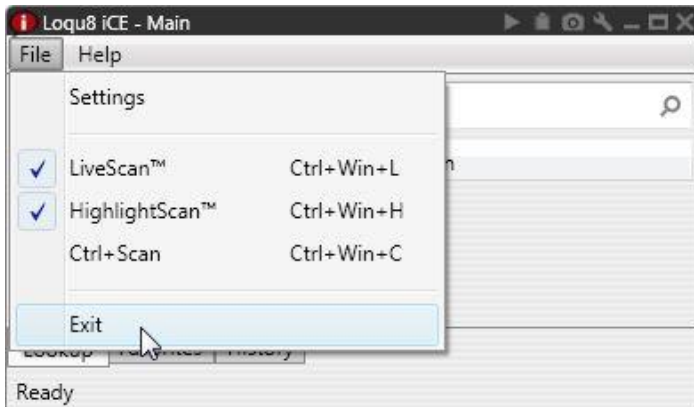
- Copy Ctrl+Alt+C
- Pronounce Ctrl+Alt+N
- Lookup Ctrl+Alt+L
- Breakdown Ctrl+Alt+B
- Export Ctrl+Alt+X
- Edit/Add Word Ctrl+Alt+E

## Selective Copy

- Copy Simplified Ctrl+Alt+S
- Copy Traditional Ctrl+Alt+T
- Copy Pinyin Ctrl+Alt+P
- Copy Bopomofo Ctrl+Alt+Z
- Copy Definition Ctrl+Alt+D

\* If another application uses the same shortcuts, then these keys will not be available.

# Universal Shortcuts



These shortcuts control the LiveScan and HighlightScan are available whenever iCE is running.\*

- Scan On/Off                      Ctrl+Win+Space
- Toggle LiveScan                 Ctrl+Win+L
- Toggle HighlightScan          Ctrl+Win+H
- Toggle Ctrl+Scan                Ctrl+Win+C
- Snapshot                         Ctrl+Win+S

\* If another application uses the same shortcuts, then these keys will not be available.

# Learn more

Get the most from your Loqu8 iCE software.



Learn more about Loqu8 iCE:

- View video tutorials of iCE highlights:  
<http://www.loqu8.com/videos.htm>
- Tour the top 5 features:  
<http://www.loqu8.com/feature.tour.htm>
- Dig deeper into selected features:  
<http://www.loqu8.com/features.htm>
- Browse or print documentation:  
<http://www.loqu8.com/documentation.htm>
- All features are not support in every edition. Compare :  
<http://www.loqu8.com/editions.htm>





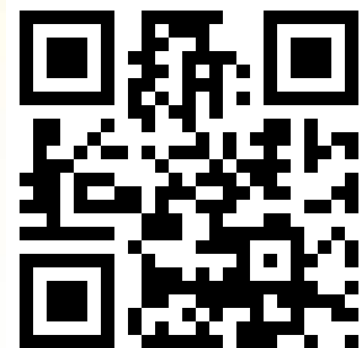
# Personalizing

Loqu8 iCE Learn Chinese  
iNterpret Chinese-English

Email	<a href="mailto:info@loqu8.com">info@loqu8.com</a>
Website	<a href="http://www.loqu8.com">www.loqu8.com</a>
Purchase	<a href="http://www.loqu8.com/buy.htm">www.loqu8.com/buy.htm</a>
Support	<a href="http://www.loqu8.com/support.htm">www.loqu8.com/support.htm</a>

© Copyright 2013 Loqu8, Inc. All rights reserved. Rev 6.6

No portion of this document may be reproduced in any form, by any means or translated into any language in any form by any means without prior written permission from Loqu8.



<http://www.loqu8.com>